



It is estimated more than a quarter of a million visitors visit ForestrySA forest reserves each year, to enjoy activities such as walking, bike riding, horse riding, caving and a diverse range of organised and competitive events, making them a popular place to visit.

ForestrySA manages an additional 23,000ha of native forest area for conservation and provides community and recreational facilities within its South Australian forest reserves.

In line with its role as a commercial forest manager, ForestrySA's main focus is the production of log and chip, which is used to produce sawn timber, pulp, paper and posts.

ForestrySA manages more than 95,000ha of primarily softwood plantation in the Green Triangle and Ranges regions of South Australia. This valuable timber resource is managed on behalf of plantation owner OneFortyOne Plantations Pty Ltd in the Green Triangle and the South Australian Government in the Mount Lofty Ranges and Mid North.

## About ForestrySA



# Green Triangle Forests

## Visitor Information



Walking, cycling and horse riding are popular activities in ForestrySA forests. The forest road and track network is used extensively by forest visitors for these activities. To ensure all visitors can continue to enjoy themselves safely, avoid forestry operations and observe normal trail etiquette.

## Trails

ForestrySA maintains many roads and tracks within its Green Triangle Forest for forest operations such as plantation establishment and tending, logging and fire protection. Forest roads and tracks that are open to the public are subject to normal road rules. Please note that not all roadways will be adequate for your vehicle.

## Forest access

Dogs are welcome in plantation forest areas, provided they are kept under direct control at all times and kept on a leash when in picnic areas or near other forest users or wildlife such as kangaroos. To protect native wildlife, dogs and other pets are not permitted in Native Forest Reserves. Please be aware fox baiting programs are undertaken periodically in Native Forest Reserves for native wildlife protection.

## Dogs in the forest



The Limestone Coast region is well known for its extensive network of caves and sinkholes. These range from small inaccessible shafts, to large water-filled caverns and a number are located within ForestrySA's Green Triangle forest reserves. All cave divers must have Cave Diving Association of Australia accreditation and obtain a permit before entering any cave or sinkhole on a forest reserve. Contact ForestrySA for more information.

## Caving

Activities such as caving and horse riding are permitted in ForestrySA's Green Triangle Forest, provided a permit (available from Head Office) has been issued. Many events and activities including orienteering, mountain biking, horse riding and organised motorsports are held in forest reserves. These are authorised on a case-by-case basis following the submission of an event application. Contact ForestrySA for more information.

## Forest activities and events



## Green Triangle Forest Reserves

ForestrySA's Green Triangle Forest is primarily for wood production, with limited opportunities for recreation. The Green Triangle Forest area is divided into three forest districts – Mount Burr, Mount Gambier and Penola.

## Conservation of Native Forest Reserves

ForestrySA's Green Triangle Forest includes more than 12,000ha of gazetted Native Forest Reserves. These areas are reserved for flora and fauna conservation and include a network of biodiversity corridors linking islands of remnant vegetation. These native forests are of high conservation value and contain a rich variety of trees, shrubs, ground cover species and significant habitat such as permanent wetlands. They provide food and nesting hollows for endangered animals including the sugar glider and red-tailed black cockatoos.

Native Forest Reserves are an important resource for scientific research and provide opportunities for activities such as nature study, bird watching and bushwalking.

## Contact

Corporate Office  
Jubilee Highway East  
Mount Gambier  
South Australia 5290

Phone: (08) 8724 2888  
Fax: (08) 8724 2870  
Email: [forestrysa@forestrysa.com.au](mailto:forestrysa@forestrysa.com.au)  
Web: [www.forestrysa.com.au](http://www.forestrysa.com.au)

Certified to Australian Forestry Standard AS 4708



ForestrySA





## Picnicking

A number of small picnic areas are located at information stops in scenic areas of the Green Triangle forest. Please leave picnic areas as you find them and remember to take all your rubbish with you when you leave.

## Camping

Camping is not permitted in Green Triangle Forest Reserves, but there are a number of camp sites available in nearby parks such as Victoria's Glenelg National Park, Piccaninie Ponds and Telford Scrub. A number of caravan parks are also available in nearby towns and cities such as Mount Gambier, South Australia and Nelson, Victoria.

## Total Fire Ban and forest closure

For your safety, forest reserves are closed to the public on declared Total Fire Ban days and in areas where forest operations such as harvesting are being undertaken.

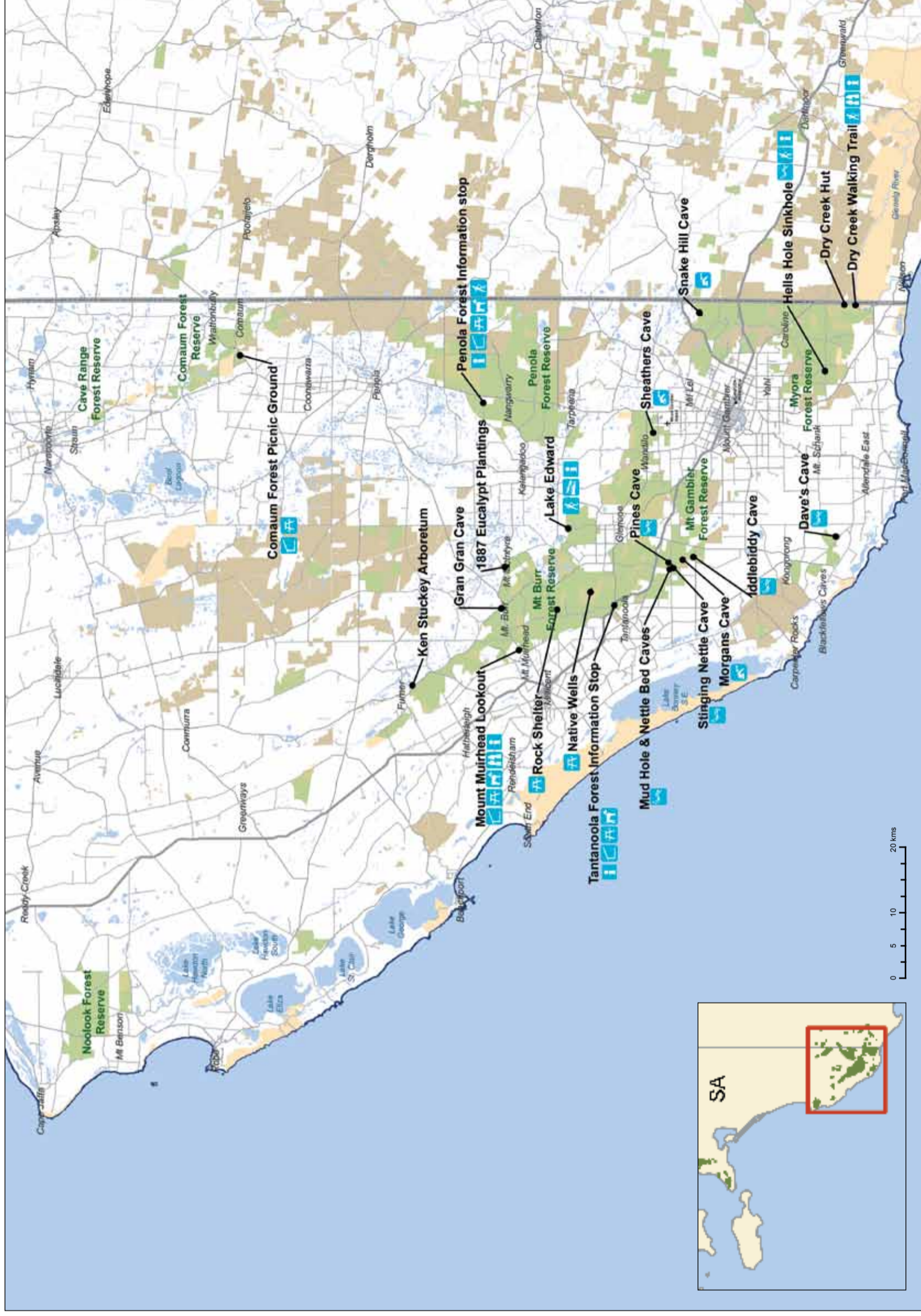
Visitors should keep clear of logging operations and pay attention to all signage. It is recommended that visitors contact the Forest Ranger before visiting to obtain information.

**The forest is closed to the public on declared Total Fire Ban days. In the event of a fire call 000.**

## Green Triangle Forest Region

- |  |               |  |                     |  |                |
|--|---------------|--|---------------------|--|----------------|
|  | Information   |  | Walking Trails      |  | Caving         |
|  | Accommodation |  | Cycling             |  | Viewing Area   |
|  | Shelter       |  | Horse Riding        |  | Toilets        |
|  | Camping       |  | Campfires Permitted |  | Drinking Water |
|  | Picnic Area   |  | BBQ Facilities      |  | Cave Diving    |
|  |               |  |                     |  | Dogs Permitted |
|  |               |  |                     |  | Boating        |

Fires not permitted during Fire Season



Disclaimer: This document was produced by or on behalf of the Government of South Australia. The Government of South Australia gives no warranty and makes no representation, express or implied, as to the accuracy of the information contained within this document or the suitability of the information for any purpose. Any use of the information contained in this document (whether authorised or not) is at the sole risk of the user and the Government of South Australia disclaims responsibility for any loss or damage incurred as a result of such use. The information is provided solely on the basis that users of the information will make their own assessment as to the accuracy of the information and users are advised to verify all information contained within this document.

### DATA SOURCES

Other Plantation Owners: SERIC  
 Victorian Roads: VicMap  
 SA Roads and Water Bodies: Department for Environment & Heritage  
 Document Code: MAP021  
 Issue Date: 15/3/2011  
 Review Date: 15/3/2012

- |  |                          |  |              |
|--|--------------------------|--|--------------|
|  | ForestrySA Plantation    |  | Water Bodies |
|  | ForestrySA Native Forest |  | Parks        |
|  | Other Plantation Owners  |  |              |

