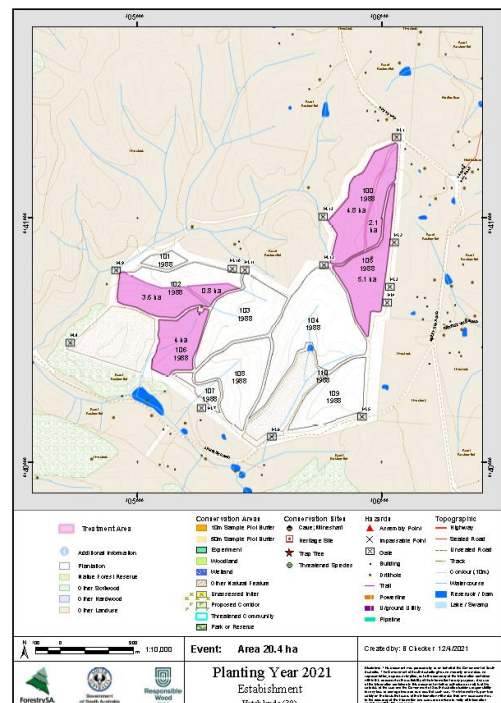


Mount Lofty Ranges Forestry Operations
Planned Pine Plantation Reestablishment area
Forest : Mount Crawford
Locality: Hatchlands
Planting Year 2021

Table below is an indication of the timing for major activities which occur during the reestablishment period.

Operation	Operation date (Period)
Windrowing / Clearing	Nil
Weed Control (Aerial Helicopter) P-10 (10 months prior to planting)	Nil
Burning - Waste material (Windrows or Heaps)	May 2021
Re-heaping if required	Nil
Cultivation - Wilco Spot	Completed
Weed Control (Aerial Helicopter) P-2 (2 months prior to planting)	May 2021
Re-burn if required	Nil
Planting	June - July 2021
Weed Competition (Aerial Helicopter) P+ 4 (4 months after planting)	Oct - Nov 2021
Weed Competition (Aerial Helicopter) P+10 (10 months after planting)	May - June 2022



Some of these activities will necessitate temporary public exclusion from the forest in the vicinity of the activity.

 Questions regarding an operation, may be directed by email forestrysa@forestrysa.com.au (Att: Brian) or telephone (08 8391 8800).

ForestrySA is transitioning to e-record environment. Maps for the above operations and future year's operation will be displayed on the ForestrySA website. We encourage you to visit this site.
Major updates will occur around April and September each year.

Please note letter was sent out April 2018 to all ForestrySA adjacent neighbours with their Owner ID number at the top of that letter. This is unique to you. Please quote this in any correspondence.

ForestrySA