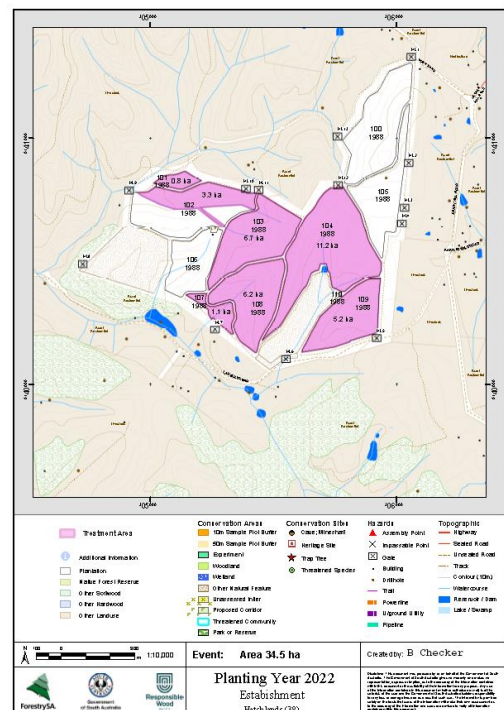


Mount Lofty Ranges Forestry Operations
Planned Pine Plantation Reestablishment area
Forest : Mount Crawford
Locality: Hatchlands
Planting Year 2022

Table below is an indication of the timing for major activities which occur during the reestablishment period.

Operation	Operation date (Period)
Windrowing / Clearing	At time of Cultivation
Weed Control (Aerial Helicopter) P-10 (10 months prior to planting)	Oct – Nov 2021
Burning - Waste material (Windrows or Heaps)	May – June 2022
Re-heaping if required	Nil
Cultivation - Wilco Spot	Sept – Dec 2021
Weed Control (Aerial Helicopter) P-2 (2 months prior to planting)	May 2022
Re-burn if required	May 2022
Planting	June - July 2022
Weed Competition (Aerial Helicopter) P+ 4 (4 months after planting)	Oct - Nov 2022
Weed Competition (Aerial Helicopter) P+10 (10 months after planting)	May - June 2023



Some of these activities will necessitate temporary public exclusion from the forest in the vicinity of the activity.

 Questions regarding an operation, may be directed by email forestrysa@forestrysa.com.au (Att: Brian) or telephone (08 8391 8800).

ForestrySA is transitioning to e-record environment. Maps for the above operations and future year's operation will be displayed on the ForestrySA website. We encourage you to visit this site.
Major updates will occur around April and September each year.

Please note letter was sent out April 2018 to all ForestrySA adjacent neighbours with their Owner ID number at the top of that letter. This is unique to you. Please quote this in any correspondence.

ForestrySA