

Mount Crawford Forest

Land was first purchased for forestry at Mount Crawford in 1909. Plantings commenced in 1914 and continued to expand until the 1960s. Many of the original plantations have since been clear felled and replanted.

Today, the Mount Crawford Forest covers an area of 12,367 hectares and is modelled as a community forest. It is managed for sustainable commercial forestry, while providing for the conservation of native flora and fauna and community use for recreation.

This brochure covers the eastern section of the reserve, which is located between the townships of Williamstown, Mount Pleasant and Forreston.

Native Forest Reserves

Mount Crawford Forest contains 4,440 hectares of native vegetation protected for conservation. This includes eight gazetted Native Forest Reserves covering 3,600 hectares.

These Native Forest Reserves and conservation zones are of high conservation value, containing a rich variety of trees, shrubs and ground cover species that provide significant habitat for native birds, reptiles and mammals.

Native forest areas are an important resource for scientific research and provide opportunities for activities such as nature study, bird watching and bush walking.

Forest Safety

Be aware trees or tree branches may occasionally fall in the forest. Park vehicles in designated carparks and keep to marked trails and vehicle tracks. We strive to provide a safe and enjoyable stay for all visitors, but your safety is your responsibility.



Old School House



Horse Riding

Permits and fees apply when riding horses in the forest. Purchase permits at [forestrysa.com.au/horse-riding](http://forestrysa.com.au/horse-riding)

Forests provide extensive opportunities for enjoyable riding in a relaxed environment. The network of existing fire tracks in plantation pine areas is available for riding. Horse riding is not permitted in Native Forest Reserves which have been set aside for conservation. Please avoid picnic areas and campgrounds.

Consider the forest trail code on multiple use trails as you may encounter cyclists and walkers during your ride. Using clean feed limits the chances of weeds spreading. Please remove all manure and feed upon departure.

Forest Activities & Events

Many organised competitions and events are held in the forest. These require the submission of an event application form (available from our website) and are approved on a case-by-case basis.

Such events may include orienteering, mountain biking, horse riding, scout and school camps and organised motorsports. Contact the Mount Crawford Forest Information Centre for more information.

Orienteering

There is one permanent orienteering course established within Mount Crawford Forest in conjunction with OrienteeringSA.

The course contains an Easy and Moderate level, providing a solid introduction to this popular recreational activity. Course maps are available from the Mount Crawford Forest Information Centre or visit [sa.orienteering.asn.au](http://sa.orienteering.asn.au)

Dogs in the Forest

Dogs are welcome in plantation forest areas, including campgrounds, walking trails and picnic areas. Dogs must be on a lead within on-lead zones and under effective control at all times while in the forest.

For more information regarding dogs in the forests and maps showing on-lead zones, please visit:

[forestrysa.com.au/dogs-in-the-forest/](http://forestrysa.com.au/dogs-in-the-forest/)

To protect native wildlife, dogs and other pets are not permitted in Native Forest Reserves.

Total Fire Ban and Forest Closures

For your safety, forest reserves are closed to the public on declared Total Fire Ban days and in areas where forest operations such as harvesting are being undertaken. Visitors must keep clear of logging operations and pay attention to all signs.

Forests are closed on days of Total Fire Ban.

This forest is located within the Mount Lofty Ranges Fire Ban District. For CFS fire ban information phone 1300 362 361 or visit the CFS website.

Being aware of a Total Fire Ban is your responsibility.

Campfires and Barbecues

Wood fires are permitted within designated fire pits from 1 May to 31 October each year. Gas fires are permitted from 1 April to 30 November.

	Jan	Feb	Mar	Apr	May	Jun	Jul	Aug	Sep	Oct	Nov	Dec
Camping												
Wood fires												
Gas fires												
= Allowed during that month = Prohibited during that month (penalties apply)												

Fire pits must be cleared of all flammable material for a distance of four metres. Fires must always be monitored and fully extinguished before departure. Please bring your own firewood.

It is an offence to cut down or damage any living or standing vegetation, or to remove any timber from a forest reserve without permission.

Mt Crawford Fire Lookout Tower



Mt Crawford Forest Information Centre

Warren Road, Williamstown, SA 5351

Open: 10am - 12pm

(Friday to Sunday only, subject to ranger availability)

Phone: (08) 8391 8800

Email: [recreation@forestrysa.com.au](mailto:recreation@forestrysa.com.au)

Web: [forestrysa.com.au](http://forestrysa.com.au)



Certified to Australian Forestry Standard AS 4708



Facilities for Hire

Bookings are required for all facilities and can be made online at [forestrysa.com.au/accommodation](http://forestrysa.com.au/accommodation)

A minimum booking of two nights applies.

Old School House

A 10.5 km drive from the Mount Crawford Forest Information Centre (MCFIC), with access from Springton Road via Fire Gate MR4.

This historic old building is located 450 m from the gate and offers bunk style accommodation for six (bedding required), with a slow combustion heater, kitchen annex, solar lighting, toilet and untreated rainwater with nearby access to the Heysen Trail.

Youth Hostel Road (YHA)

A 7.5 km drive from MCFIC, with access from Mount Road via Fire Gate BH1. This scenic, secure creekside location is 600 m from the gate with space and privacy for small to medium groups. It has a shelter, picnic table, fire pit, toilet and camping area with nearby access to the Heysen Trail.

Fromms Farm

A 4 km drive from MCFIC with access from Mount Road via Fire Gate DW5. Once an old dairy, this large three-sided shelter provides space for medium to large groups offering a fireplace, untreated rainwater, picnic tables and pit toilet.

Ponderosa Horse Camp

A 9 km drive from MCFIC with access from Starkey Road via Fire Gate DW11. This large campground is set between native and plantation pine forest and is designed for those camping with horses and riders of the Kidman Trail.

It offers a small shelter, 4 horse yards, untreated rainwater, picnic tables and a pit toilet.

Cromer Shed

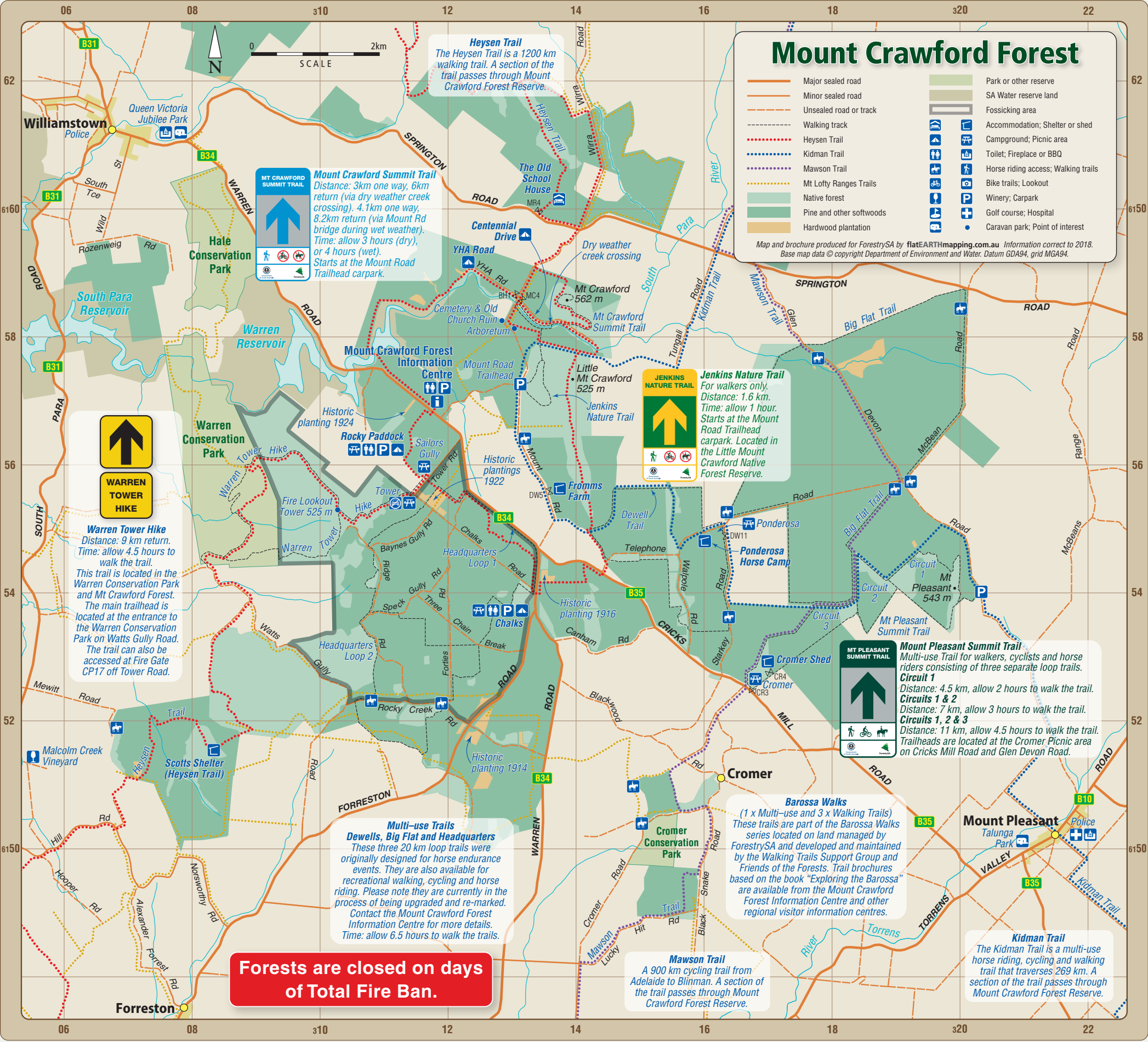
A 7 km drive from MCFIC with access from Cricks Mill Road (Mt Pleasant Road) via Fire Gate CR3. Drive 400 m north to Fire Gate CR4.

The large three-sided shelter is nestled within low, open native vegetation 200 m from the gate. Suitable for small to medium groups offering a fireplace/wood BBQ inside, solar lighting, untreated rainwater and a pit toilet.

Mt Crawford Forest Visitor Information







Campgrounds

BOOKINGS REQUIRED

Online booking and payment required. Please visit [forestrysa.com.au/camping](http://forestrysa.com.au/camping)

Chalks Campground

A 3.5 km drive from MCFIC with access through the Chalks Road entrance. Named after one of the original foresters at Mount Crawford, this basic bush campground is nestled amongst red gums with picnic tables, a shelter, accessible toilets, untreated rainwater and a hut with fireplace. Access to the Heysen Trail nearby.

Rocky Paddock Campground

A 1.8 km drive from MCFIC with access via Tower Road entrance and Sailors Gully Picnic Area. This basic bush campground features many rocky outcrops in an old pine plantation with picnic tables, accessible toilets and untreated rainwater.

Picnic Areas

Sailors Gully Picnic Area

A 3 km drive from MCFIC, this popular picnic area is situated in a stand of eucalypts adjacent a small creek with a picnic table and fire pit. The closest toilet facility is located at the Rocky Paddock Campground. This site also provides access to the Warren Tower Hike and Heysen Trail.

Tower Picnic Area

Located 2.4 km from MCFIC, this picnic area no longer has vehicle access but is still available for use and has two picnic tables. The closest toilet facilities are located at the Rocky Paddock and Chalks Campgrounds. Also provides access to the Warren Tower Hike and Heysen Trail.

Cromer Picnic Area

A 7 km drive from MCFIC with access from Cricks Mill Road via Fire Gate CR 3. This popular picnic area is surrounded by various hardwood and softwood plantation species, offering a small number of picnic tables and a fire pit. This site also provides access to the Mount Pleasant Summit Trail.



Heysen Trail Facilities

There are two overnight facilities available to walkers of the Heysen Trail in the eastern section of the Mount Crawford Forest Reserve. They include a shelter and campsite in the Scott's area (see grid reference 076 517), and Rossiter's Hut in the Pewsey Vale area. For more information visit [heysentrail.asn.au/heysen-trail/accommodation](http://heysentrail.asn.au/heysen-trail/accommodation)

Multiple Use Trails

Walking, cycling and horse riding are all popular activities in Mount Crawford Forest Reserve. The Heysen (walking), Mawson (cycling) and Kidman (horse riding) trails pass through the reserve.

There are four multi-use loop trails and three walking trails within the reserve. For more information regarding the extensive trail network, refer to the map or contact MCFIC.

Forest Trail Code

The forest trail and road network is used by walkers, horse riders and cyclists. To ensure everyone's enjoyment and safety please follow these guidelines:

- For your safety, avoid areas where access is restricted, including where forestry operations are in progress. Look for signs.

- Always wear a helmet when cycling and horse riding and travel at a safe speed according to your experience, track conditions and terrain.

- Consider other users. Cyclists give way to walkers and both must give way to horse riders. Courtesy is the key.

- Avoid steep, muddy or loose trails and surfaces where the tracks left behind can channel rainwater and cause erosion.

Fossicking

Permits and fees apply to fossick in the forest. To purchase a permit visit [forestrysa.com.au/fossicking](http://forestrysa.com.au/fossicking)

The following guidelines apply:

- Fossicking is permitted only in the area shown on the map. Plants, animals and man-made or natural features must be left undisturbed.

- Do not dam, divert or pollute streams.

- Only hand operated tools such as pans, hand sluices and metal detectors are permitted.

- All holes must be kept to a minimum size and must be backfilled immediately.

- Stay clear of old mineshafts.

- Children must be supervised at all times.