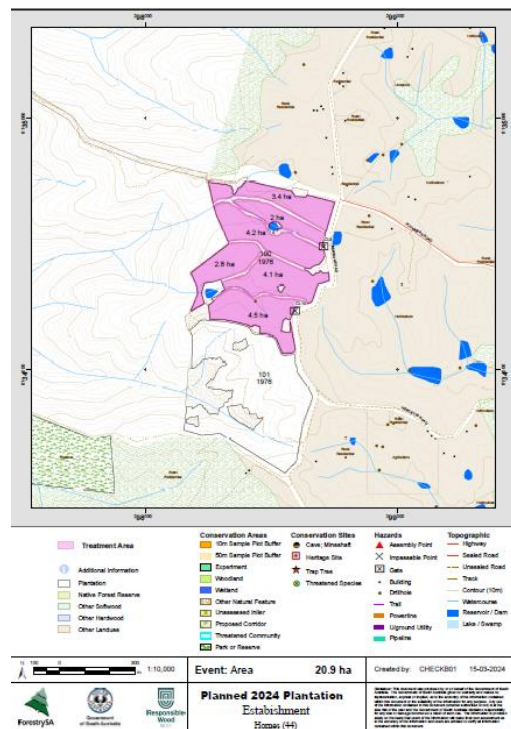


Mount Lofty Ranges Forestry Operations
Planned Pine Plantation Reestablishment area
Forest : Mount Crawford
Locality: Hornes
Planting Year 2024

Table below is an indication of the timing for major activities which occur during the reestablishment period.

Operation	Operation date (Period)
Windrowing / Clearing /Chopper Rolling	Completed
Burning - Waste material (Windrows or Heaps)	Completed
Weed Control (Aerial Helicopter) P-10 (10 months prior to planting)	Completed
Re-heaping if required	Completed
Cultivation (Ripping)	Completed
Weed Control (Aerial Helicopter) P-2 (2 months prior to planting)	(Autumn) May 2024
Re-burn if required	Nil
Planting	June - July 2024
Weed Competition (Aerial Helicopter) P+ 4 (4 months after planting)	(Spring) Oct - Nov 2024
Weed Competition (Aerial Helicopter) P+10 (10 months after planting)	(Autumn) May - June 2025



Some of these activities will necessitate temporary public exclusion from the forest in the vicinity of the activity.

 Questions regarding an operation, may be directed by email forestrysa@forestrysa.com.au (Att: Operations)

ForestrySA