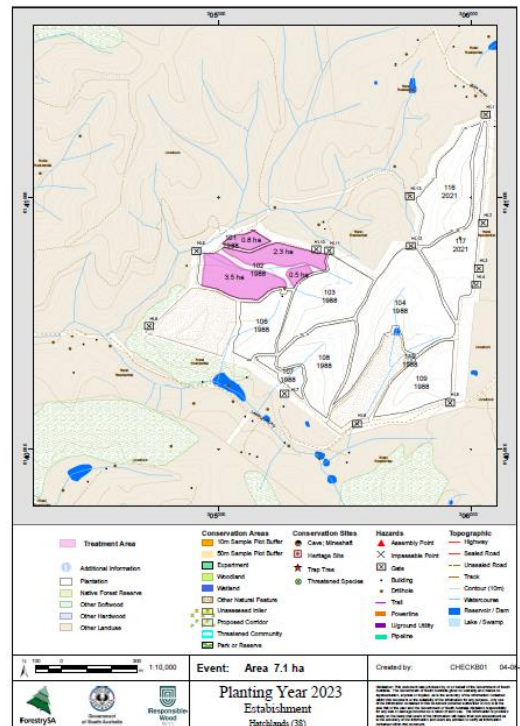


**Mount Lofty Ranges Forestry Operations**
**Planned Pine Plantation Reestablishment area**
**Forest : Mount Crawford**  
**Locality: Hatchlands**  
**Planting Year 2023**

Table below is an indication of the timing for major activities which occur during the reestablishment period.

Operation	Operation date (Period)
Windrowing / Clearing /Chopper Rolling	N/A
Burning - Waste material (Windrows or Heaps)	N/A
Weed Control (Aerial Helicopter) P-10 (10 months prior to planting)	Completed
Re-heaping if required	N/A
Cultivation (Wilco Spot)	Completed
Weed Control (Aerial Helicopter) P-2 (2 months prior to planting)	Completed
Re-burn if required	N/A
Planting	June - July 2023
Weed Competition (Aerial Helicopter) P+ 4 (4 months after planting)	(Spring) Oct - Nov 2023
Weed Competition (Aerial Helicopter) P+10 (10 months after planting)	(Autumn) May - June 2024



Some of these activities will necessitate temporary public exclusion from the forest in the vicinity of the activity.

 Questions regarding an operation, may be directed by email [forestrysa@forestrysa.com.au](mailto:forestrysa@forestrysa.com.au) (Att: Operations)

ForestrySA