

## Mount Lofty Ranges Forestry Operations

### 2024 Pine Plantation Reestablishment area

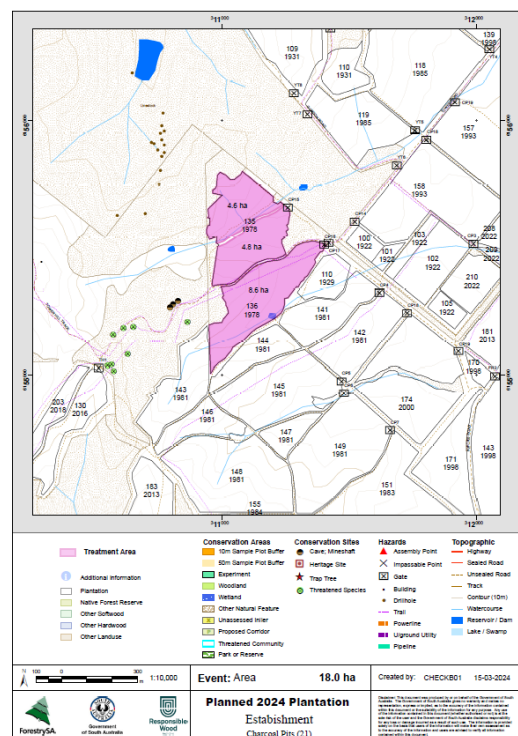
**Forest : Mount Crawford**

**Locality: Charcoal Pits**

**Planting Year 2024**

Table below is an indication of the timing for major activities which occur during the reestablishment period.

Operation	Operation date (Period)
Windrowing / Clearing /Chopper Rolling	Completed
Burning - Waste material (Windrows or Heaps)	Completed
Weed Control (Aerial Helicopter) P-10 (10 months prior to planting)	Completed
Re-heaping if required	Completed
Cultivation (Ripping)	Completed
Weed Control (Aerial Helicopter) P-2 (2 months prior to planting)	Completed
Re-burn (Heaps)	Completed
Planting	Completed
Weed Competition (Aerial Helicopter) P+ 4 (4 months after planting)	Completed
Weed Competition (Aerial Helicopter) P+10 (10 months after planting)	(Autumn) May - June 2025



Some of these activities will necessitate temporary public exclusion from the forest in the vicinity of the activity.

Questions regarding an operation, may be directed by email [notifications@forestrysa.com.au](mailto:notifications@forestrysa.com.au) (Att: Operations)

Forestry

## Mount Lofty Ranges Forestry Operations

### 2024 Pine Plantation Reestablishment area

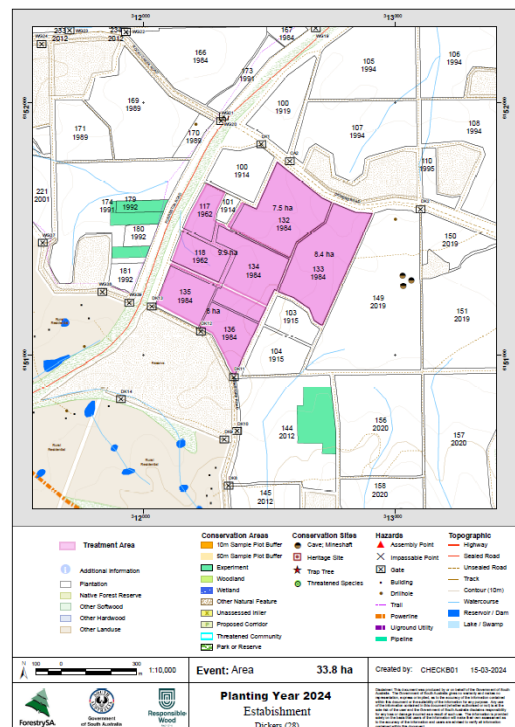
**Forest : Mount Crawford**

**Locality: Dickers**

**Planting Year 2024**

Table below is an indication of the timing for major activities which occur during the reestablishment period.

Operation	Operation date (Period)
Windrowing / Clearing /Chopper Rolling	Completed
Burning - Waste material (Windrows or Heaps)	Completed
Weed Control (Aerial Helicopter) P-10 (10 months prior to planting)	Completed
Re-heaping if required	Completed
Cultivation (Ripping)	Completed
Weed Control (Aerial Helicopter) P-2 (2 months prior to planting)	Completed
Re-burn if required	Not Required
Planting	Completed
Weed Competition (Aerial Helicopter) P+ 4 (4 months after planting)	Completed
Weed Competition (Aerial Helicopter) P+10 (10 months after planting)	(Autumn) May - June 2025



Some of these activities will necessitate temporary public exclusion from the forest in the vicinity of the activity.

Questions regarding an operation, may be directed by email [notifications@forestrysa.com.au](mailto:notifications@forestrysa.com.au) (Att: Operations)

ForestrySA

## Mount Lofty Ranges Forestry Operations

### 2024 Pine Plantation Reestablishment area

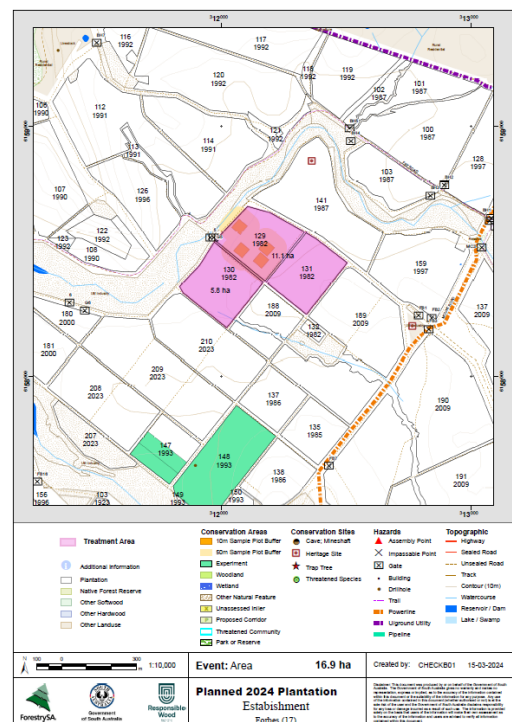
**Forest : Mount Crawford**

**Locality: Forbes**

**Planting Year 2024**

Table below is an indication of the timing for major activities which occur during the reestablishment period.

Operation	Operation date (Period)
Windrowing / Clearing /Chopper Rolling	Completed
Burning - Waste material (Windrows or Heaps)	Completed
Weed Control (Aerial Helicopter) P-10 (10 months prior to planting)	Completed
Re-heaping if required	Completed
Cultivation (Ripping)	Completed
Weed Control (Aerial Helicopter) P-2 (2 months prior to planting)	Completed
Re-burn if required	Nil
Planting	Completed
Weed Competition (Aerial Helicopter) P+ 4 (4 months after planting)	Completed
Weed Competition (Aerial Helicopter) P+10 (10 months after planting)	(Autumn) May - June 2025



Some of these activities will necessitate temporary public exclusion from the forest in the vicinity of the activity.

Questions regarding an operation, may be directed by email [notifications@forestrysa.com.au](mailto:notifications@forestrysa.com.au)  
(Att: Operations)

ForestrySA

## Mount Lofty Ranges Forestry Operations

### 2024 Pine Plantation Reestablishment area

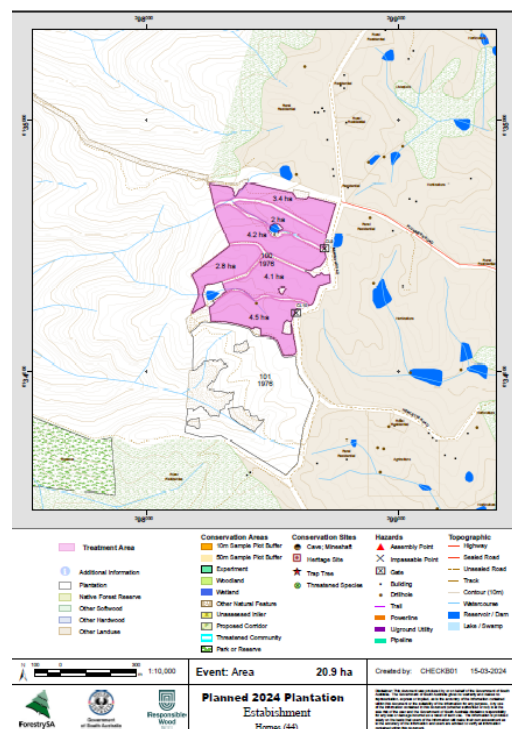
**Forest : Mount Crawford**

**Locality: Hornes**

**Planting Year 2024**

Table below is an indication of the timing for major activities which occur during the reestablishment period.

Operation	Operation date (Period)
Windrowing / Clearing /Chopper Rolling	Completed
Burning - Waste material (Windrows or Heaps)	Completed
Weed Control (Aerial Helicopter) P-10 (10 months prior to planting)	Completed
Re-heaping if required	Completed
Cultivation (Ripping)	Completed
Weed Control (Aerial Helicopter) P-2 (2 months prior to planting)	Completed
Re-burn (Heaps)	Not Required
Planting	Completed
Weed Competition (Aerial Helicopter) P+ 4 (4 months after planting)	Completed
Weed Competition (Aerial Helicopter) P+10 (10 months after planting)	(Autumn) May - June 2025



Some of these activities will necessitate temporary public exclusion from the forest in the vicinity of the activity.

Questions regarding an operation, may be directed by email [notifications@forestrysa.com.au](mailto:notifications@forestrysa.com.au)  
(Att: Operations)

ForestrySA

## Mount Lofty Ranges Forestry Operations

### 2024 Pine Plantation Reestablishment area

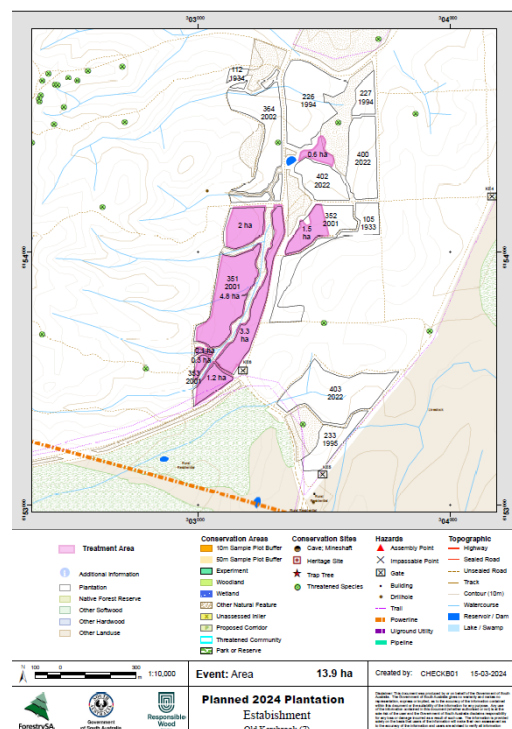
**Forest : Mount Crawford**

**Locality: Old Kersbrook**

**Planting Year 2024**

Table below is an indication of the timing for major activities which occur during the reestablishment period.

Operation	Operation date (Period)
Windrowing / Clearing /Chopper Rolling	Completed
Burning - Waste material (Windrows or Heaps)	Completed
Weed Control (Aerial Helicopter) P-10 (10 months prior to planting)	Completed
Re-heaping if required	Completed
Cultivation (Ripping)	Completed
Weed Control (Aerial Helicopter) P-2 (2 months prior to planting)	Completed
Re-burn if required	Nil
Planting	Completed
Weed Competition (Aerial Helicopter) P+ 4 (4 months after planting)	Completed
Weed Competition (Aerial Helicopter) P+10 (10 months after planting)	(Autumn) May - June 2025



Some of these activities will necessitate temporary public exclusion from the forest in the vicinity of the activity.

Questions regarding an operation, may be directed by email [notifications@forestrysa.com.au](mailto:notifications@forestrysa.com.au)  
**(Att: Operations)**

ForestrySA